

DINO QUEST

WORLD PREMIERE

Presented By



digim:g'c
THE EXPERIENTIAL MEDIA AGENCY



Professor Patricia Vickers-Rich
Based at Swinburne University of Technology
and Monash University

Powered By

Panasonic
BUSINESS

Exhibition Overview

THE CLOSEST YOU WILL EVER COME TO DINOSAURS – DEAD OR ALIVE

DinoQuest is a travelling exhibition developed by Science Centre Singapore, Deziign Format, Digimagic and world renowned female palaeontologist Professor Patricia Vickers – Rich.

It is one of the most exciting and educational dinosaur themed exhibition ever to go on the road and it promises to bring visitors on a great adventure. It aims to wow the audience by creating an experience of the amazing discovery of dinosaurs in Australia. The exhibition is presented using the latest in interactive technology coupled with creative storytelling.

DinoQuest is a 1,600 square metres exhibition which consist of 7 Zones each offering a different thematic experience:

<h3>Explorer's Hut</h3> <p>A theatrical retelling of how Australia's first dinosaur fossil is discovered. Visitors will also register their RFID i-DinoTag, where they will be assigned a dinosaur fossil to discover during the rest of their journey.</p>	<h3>Dinosaurs of Darkness</h3> <p>Through the recreation of a scene from Australia in the early cretaceous, visitors will travel back millions of years to encounter 'living' dinosaurs as they would have lived then.</p>
<h3>Laboratory</h3> <p>Find out what happens after bones are being excavated; how scientists figure out what the dinosaurs look like just from a few bones, and how they prepare the fossils from the rocks.</p>	<h3>Extinction Cave</h3> <p>An immersive 4D theatre that will provide visitors a glimpse of what caused the dinosaur to become extinct.</p>
<h3>Laboratory</h3> <p>Find out what happens after bones are being excavated; how scientists figure out what the dinosaurs look like just from a few bones, and how they prepare the fossils from the rocks.</p>	<h3>Dinosaur Dreaming</h3> <p>See displays of fossils and appreciate the amount of commitment and effort that palaeontologists put in to excavate and prepare these fossils.</p>

Dig Site

Recreation of an actual dig site. Here, visitors will explore topics like the geological timeline, the fossilisation process, how dinosaur bones are excavated, and the various processes / tools that palaeontologists use in a dig site.

Dino Playground

Fun and interesting zone to end off the experience. For example, visitors can doodle and draw their dinosaurs and send them off to the virtual Dinosaur Park.

Dino Playground

Fun and interesting zone to end off the experience. For example, visitors can doodle and draw their dinosaurs and send them off to the virtual Dinosaur Park.

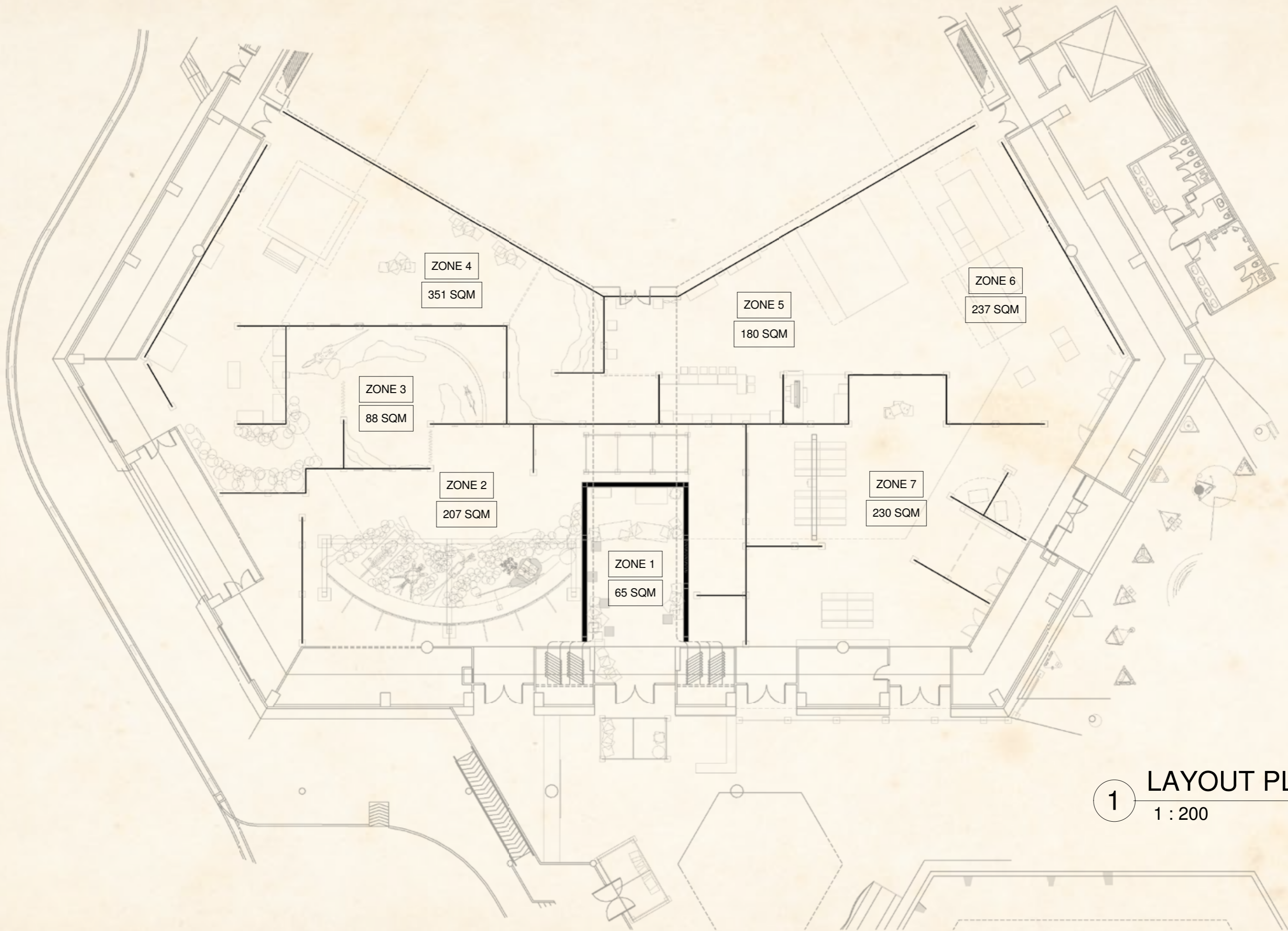
Requirements for Setup

To be provided by client:

- Accommodation (3* and above)
- Airfare (Economy Class)
- Per Diem (AU\$40/day) for 10 persons
- Professional Fees: US\$8,700
- 19 general manpower
- 1 certified electricians
- 4 media/AV professional
- Provision of internet access within the exhibition
- Power supply – 220V

Hosting the Experience

- Lease Fees: US\$80,000/month, minimum lease period of 3 months
- Minimum area requirement: 1,200 square metres
- Minimum height requirement: 5 metres
- 6 containers (2-way freight to be borne by client)



1 LAYOUT PLAN
1 : 200

Experience Flow



The Character

Professor V

Professor V is the smartest scientist in the universe. She is a passionate researcher into fossils. She is on a quest to understand their history and fulfil her dream of bringing the Dinosaurs **BACK TO LIFE**. She wants to give children a chance to learn more about dinosaurs – **FACE TO FACE**.

Rex

Rex is an adventurer and avid fan of dinosaurs – and Professor V's dedicated assistant. He joins her on her quest for evidence to back up her research.



Moving Animatronics Logo



Zone 0

DinoQuest Registration

Description: Sign up to join Prof V and Rex on the Dino Quest!

Remarks: Visitors are assigned a RFID Tag which they will register here

Exhibits

- Thematic Entrance Statement
- DinoQuest Registration Kiosk – 6 Kiosks
- Entrance Animatronics Logo
- Character stats introduction TV

Facility Requirements

- Power Supply
- WiFi Network Connection

Dimensions

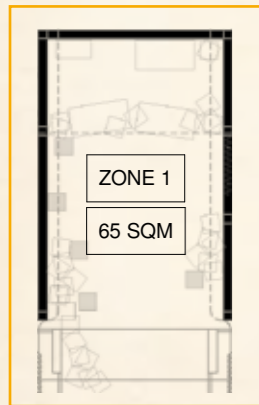
- 100sqm



Registration Kiosk Tentage



I-Dino Tag



Zone 1 Explorer's Hut

Description: At the start of the epic exhibition, guests will be introduced to their holographic guides, Professor V and her assistant Rex, through a Diorama Projection show that showcases how Australia's first dinosaur fossil was discovered. Guests will also register their RFID i-DinoTag to kick-off the quest to uncover the Polar Dinosaurs of Australia.



Zone 1 Object Theatre Introduction Show



Fossil Collection Kiosk

Exhibits

- Thematic Environment – Tentage setting, with 3D props
- Object Theatre Show with Holofans for introduction of Main Characters
- Fossil Collection Kiosks – 5 Kiosks
- Time Tunnel

Facility Requirements

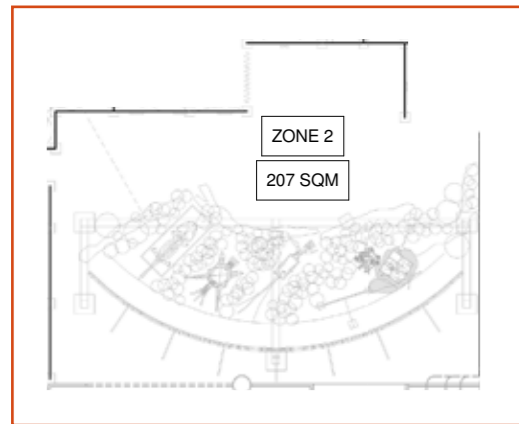
- Power Supply

Dimensions

- 131sqm



Zone 2 Dinosaurs of Darkness



Description: Through a projection show coupled with animatronics and 4D elements, visitors will travel back millions of years to explore Australia in the early cretaceous period. Take a tour into the world of dinosaurs and come face to face with prehistoric creatives including the Koolasuchus, Ankylosaur, Leaellynasaura, Pterosaur and Timimus, learning more about their habitat, behaviour and diet!



Zone 2 Object Theatre Show



Exhibits

- Zone Introduction Holofan
- 16m long screen with 5 Animatronics Dinosaurs
- Zone RFID Kiosks – 3 Kiosks

Facility Requirements

- Power Supply

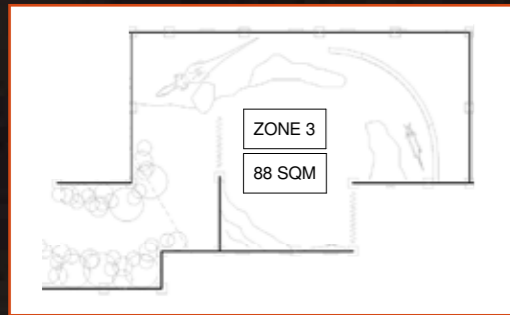
Dimensions

- 210sqm



Zone 3

Extinction Cave



Description: In an immersive 4D theatre, experience the disaster that wiped out dinosaurs in an apocalyptic display of volcanic eruption and meteorite strikes amplified by sound effects, smoke and atmospheric lighting.

Exhibits

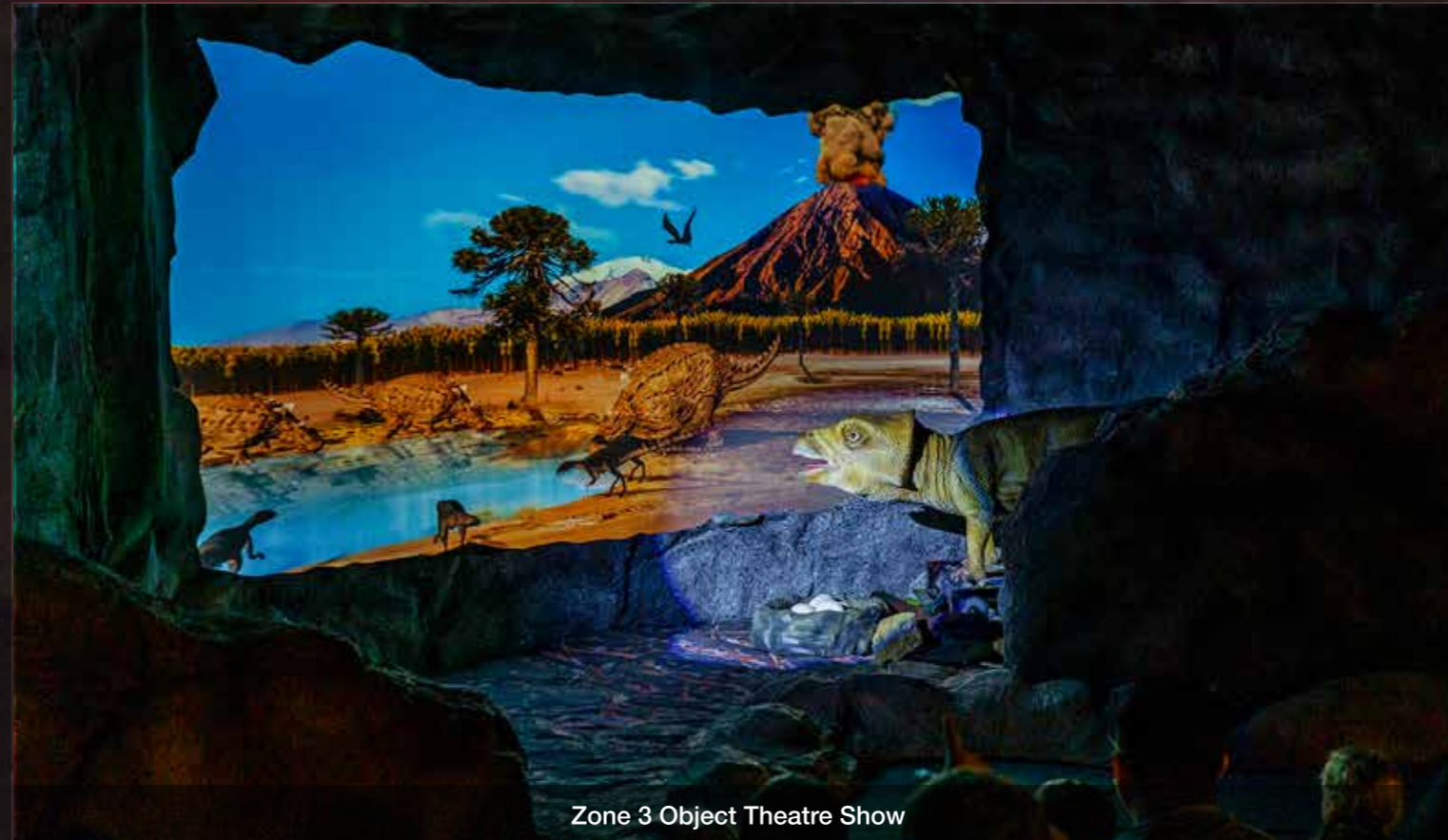
- Zone Introduction Holofan
- Object Theatre
- 3 animatronics – Ceratopsian(Show animatronics), Atlascoposaurus Loadsi, Megaraptoran

Facility Requirements

- Power Supply

Dimensions

- 88sqm



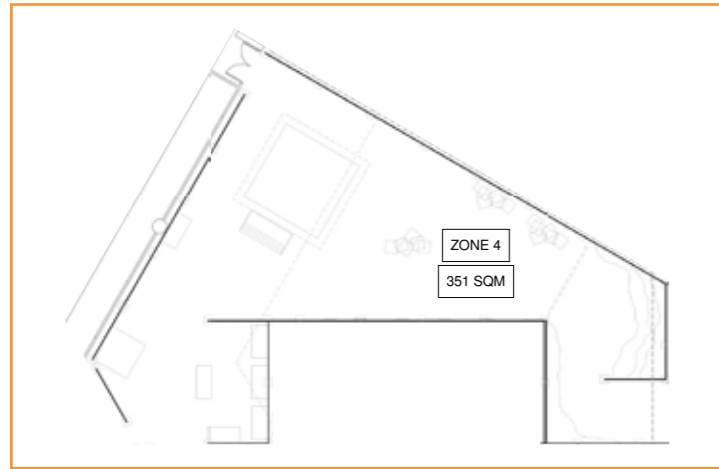
Zone 3 Object Theatre Show



Megaraptoran



Zone 4 Dig Site



Description: A recreation of an actual dig site, guests can experience more about the science of palaeontology and the process of fossilisation. Through a hologram show, discover how dinosaur fossils are formed and learn to identify different parts of their anatomy.

Exhibits

- Zone Introduction Hologram
- Fossilisation Hologram of Leallynasauras – Animation of the fossilisation process
- Geological Timeline - Thematic alcoves where you can learn about the environment and creatures that inhabited that geologic era in time.
- Tree of Life animation - Summary animation on the evolution of life.
- Dig Site 1 – Dead Tarbosaurus fossil display
- Dig Site 2 – Footprints
- Dinosaur Cove – 2 interactives (Detonator and Jackhammer)
- Zone RFID Kiosks – 5 Kiosks

Dimensions

- 351sqm



Tarbosaurus Dig Pit



Geological Timeline Fossil Display



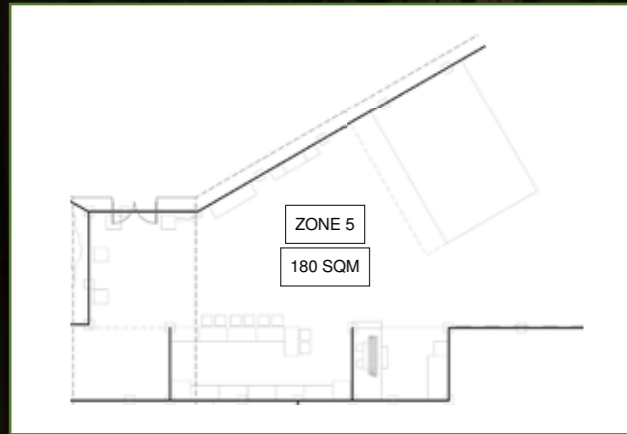
Animation of Fossilisation Process



Interactive Jackhammer



Zone 5 Laboratory



Description: In a re-creation of a palaeontologist's high-tech laboratory, guests can witness the exciting dinosaur preparation process featuring actual equipment and tools. At the Giant Megalania Alive Studio, experience how 3D Holographic Mapping can bring the creature to life. Don't miss out on the hands-on activity at the Bone Station where guests can drill into rocks from Dinosaur Cove to discover actual fossils!

Exhibits

- Zone Introduction HoloFan
- More than Dinosaur Bones – Environmental Fossils, Bird Skeleton vs Dino Skeleton
- Specimens Display – Stones, Layers, Tooth vs Tooth, Tooth vs Claw, Wentzscope Viewer, Plaster Jacket
- Lab Preparation Setting
- Lab Extraction Hands-on Drilling Activity
- Megalania Holo Viewer
- Rotoscope – Progression of Discovery Animation of Iguanodon
- Peter Trusler's Studio
- Zone RFID Kiosks – 5 Kiosks

Facility Requirements

- Power Supply

Dimensions

- 180sqm



Megalania Holo Viewer



Fossil Preparation Laboratory



Fossil Preparation Hands On Activity



Rotoscope – Iguanodon Reconstruction



Peter Trusler's Studio



Specimen Display



Specimen Display



Little L Room

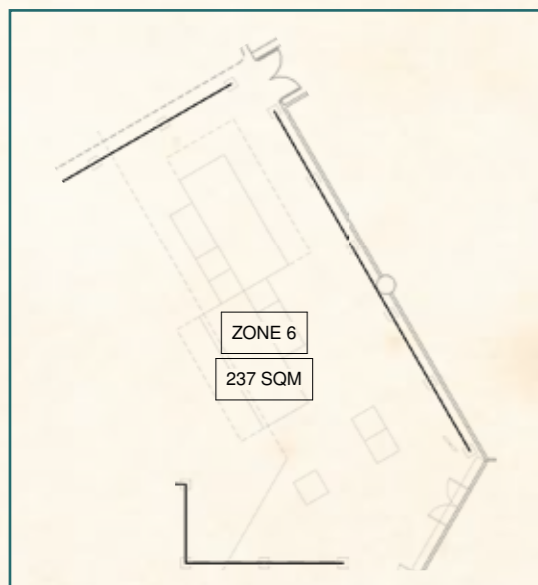


Dinosaur Cove Excavation Milestones



Zone 6

Dinosaur Dreaming



Description: Here, guests will be welcomed by a replica display of dinosaur skeletons found at Dinosaur Cove including the worldwide premiere of the most updated reconstruction of Timimus, a tyrannosauroid discovered at Dinosaur Cove in 1994. Take a journey across time and be enthralled by the myriad of colours and forms of the natural history specimens from the time of the great extinction. Uncover fossils amplified through rotating AR interactive touch screens and discover the living dinosaur descendants of today.

Exhibits

- Zone Introduction Holofan
- Specimen Display – Hypsilophodontid, Ankylosaurus, Allosauroid, Koolashuchus(Labyrinthodont), Pterosaurs, Protoceratopsian, Cryoloshosaurus, Timimus, Mammals
- Little L story book
- Zone RFID Kiosk – 5 Kiosks

Facility Requirements

- Power Supply

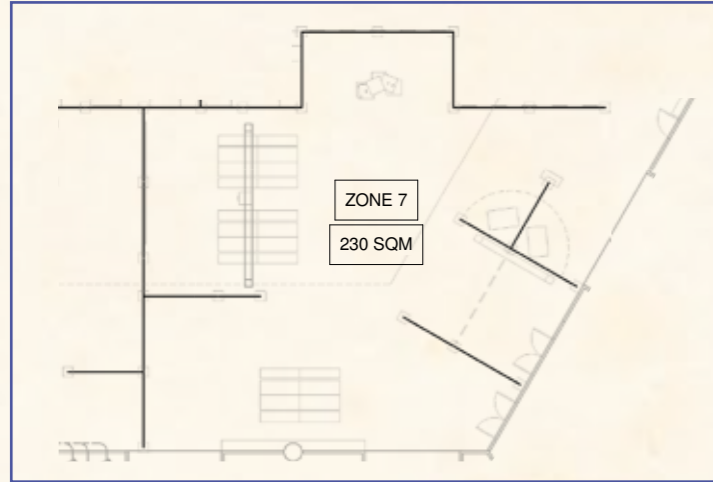
Dimensions

- 237sqm



Zone 7

Dino Playground



Description: The journey comes to a close with another hands-on activity zone where guests can create new dinosaur species by doodling and bringing it to life at the virtual animated Dinosaur Park. Draw imaginary dinosaurs, fill them with colour and swipe them into the projection screen to watch it join in the fun with other original dinosaur creations!

Exhibits

- Zone Introduction Holofan
- Dino Peekture
- Dino Doodle – 2 Printing Kiosks and 1 Scanning Kiosk
- Certificate Printing Kiosk

Facility Requirements

- Power Supply

Dimensions

- 230sqm



Dino Doodle



Dino Doodle Animation



Survivors Menagerie – See the descendants of the dinosaurs



Peek-ture – Take a photo with the virtual dinosaurs

CONTENT CURATOR

PALEONTOLOGIST



Emerita Professor
**Patricia
Vickers-Rich**

Born: 1944
Location: Australia

Patricia is a Professor of Palaeobiology in the Faculty of Science, Swinburne University of Technology, and Emerita Professor of Palaeontology in the School of Earth, Atmosphere and Environment, Monash University, both in Melbourne Australia. She is also the Founding Director of the Monash Science Centre, currently called PrimeSCII, a unique group with programmes designed to explore how science works, and, to connect science and technology with the arts, politics, economics, law and many other disciplines. Its vision is to open a window on science that offers an in-depth look at how one can use scientific investigation and knowledge in everyday life - tools for facing the future realistically and sustainably.

Pat continues to be super-active in her research interests. She remains ever involved in public science education, bringing cutting-edge science into primary and secondary schools, to refugee camps in destabilised areas of the world, and many other venues.

As the content curator for the DinoQuest exhibition, Patricia has provided her knowledge and expertise on the topic of the polar dinosaurs of Australia featured in this exhibition. She has also contributed her prized collection of specimens collected over 40 years.



ARTIST



Artist
**Peter William
Trusler**

Born: 1954
Location: Australia

ARTIST

Peter is a Melbourne freelance artist and a Zoological science graduate from Monash University, Clayton and obtained a PhD for anatomical research there in 2016. He holds a special interest in biological illustration and his work in this field is highly regarded internationally, and has been featured in numerous popular and scientific publications. The Society of Vertebrate Palaeontology has awarded him twice for the Lanzendorf Paleo Art Prize.

Peter is a foundation member of the Wildlife Art Society of Australasia, and his design work has been featured on national philatelic issues and coins. His present involvement in international geological and biological research projects spans the geological record from the Ediacaran through to the late Pleistocene.

For the DinoQuest exhibition, Peter worked on the reconstruction of Timimus, to be showcased for the first time in the exhibition. Working closely with Patricia, Peter used the latest research materials to work on the most accurate reconstruction of Timimus to date.

DINO QUEST

WORLD PREMIERE

